



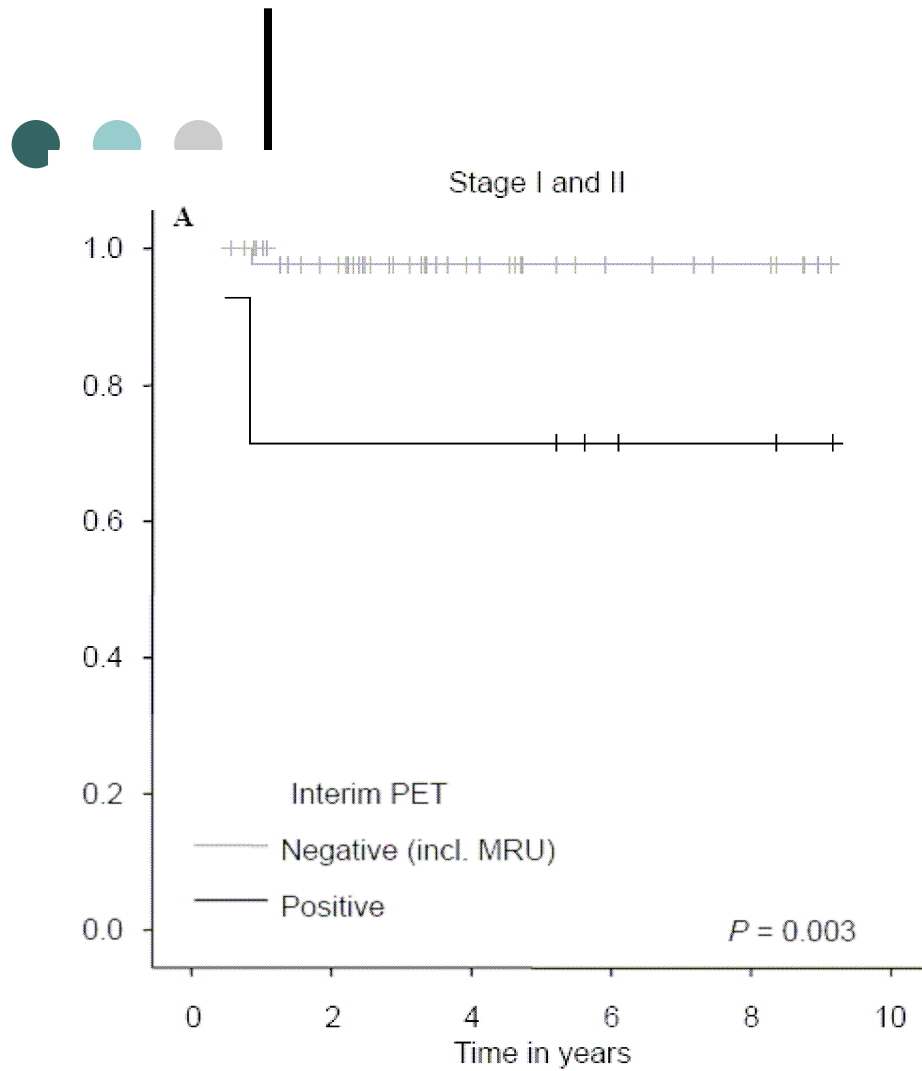
Hutchings and Barrington

Limited vs advanced stage HL: same
criteria different cut off?



Early PET in limited stage HL

- First group for early PET-response adapted lymphoma therapy although
- Less data are available on the value of early PET than in advanced stage HL and aggressive NHL



Hutchings & Mikhaeel. Ann Oncol 2005

57 stage I-II patients

Table 5. Predictive value of early interim FDG-PET according to stage and extranodal disease

	PET2 (qualitative)		Total
	Negative	Positive	
Early stage (I-IIA)			
Progression			
No	26	4	30
Yes	0	1	1
Total	26	5	31
Advanced stage (IIB-IV)			
Progression			
No	32	1	33
Yes	3	10	13
Total	35	11	46
No extranodal disease			
Progression			
No	51	5	56
Yes	3	4	7
Total	54	9	63
Extranodal disease			
Progression			
No	7	0	7
Yes	0	7	7
Total	35	7	14

Hutchings et al. Blood 2006

31 stage I-IIA patients

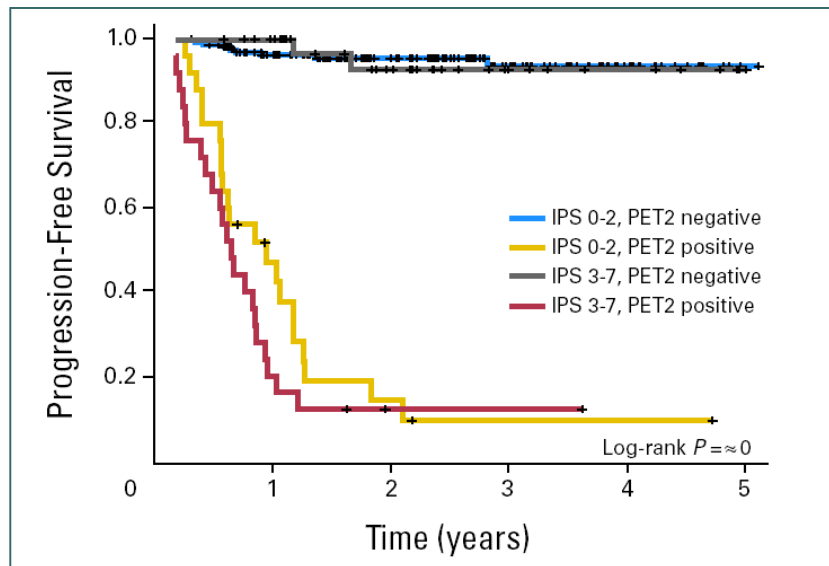


Reasons for low PPV

- The disease has an inherently very good prognosis
- Most patients receive radiotherapy to the initially involved nodes
- ?

Early PET in advanced HL

- High NPV combined with High PPV
- - at least with ABVD



According to PET-2 (+vs.-) and IPS (0-2 vs 3-7)

VOLUME 25 · NUMBER 24 · AUGUST 20 2007

JOURNAL OF CLINICAL ONCOLOGY

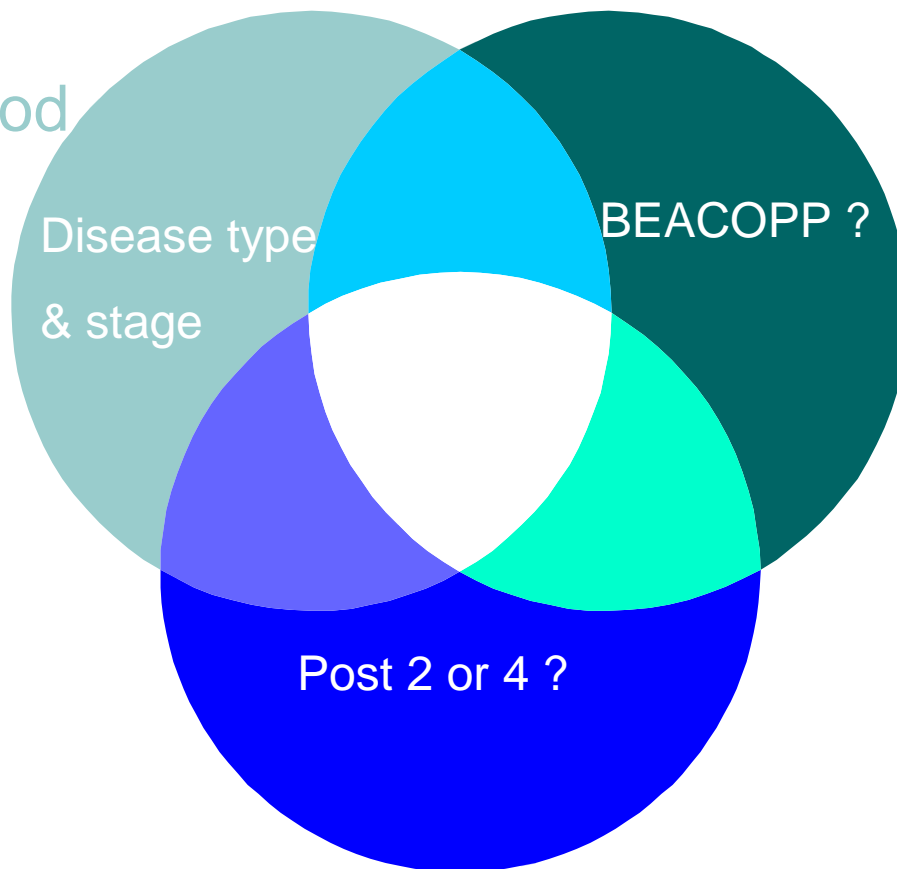
ORIGINAL REPORT

Early Interim 2-¹⁸F]Fluoro-2-Deoxy-D-Glucose Positron Emission Tomography Is Prognostically Superior to International Prognostic Score in Advanced-Stage Hodgkin's Lymphoma: A Report From a Joint Italian-Danish Study

Andrea Gallamini, Martin Hutchings, Luigi Rigacci, Lena Specht, Francesco Merli, Mads Hansen, Caterina Patti, Annika Loft, Francesco Di Raimondo, Francesco D'Amore, Alberto Biggi, Umberto Vitolo, Caterina Steliano, Rosario Sancetta, Livio Trentin, Stefano Luminari, Emilio Iannitto, Simonetta Viviani, Ivana Pierri, and Alessandro Levis



Pre test likelihood
of disease



Therapy

Timing



What do we want from test?

- High NPV desirable for de-escalation
- High PPV desirable for intensification
- Same criteria ? Different threshold

Meignan M, Gallamini A, Haioun C.

Report on the first international workshop on interim-PET scan in lymphoma.

Leuk.Lymphoma 2009;50:1257-1260.



Deauville criteria

Score 1 no uptake

Score 2 uptake \leq mediastinum

Score 3 uptake $>$ mediastinum but \leq liver

Score 4 uptake $>$ liver at any site

Score 5 uptake $>$ liver and new sites of disease

Score X:

new areas of uptake unlikely to be related to lymphoma

Meignan M, Gallamini A, Haioun C.

Report on the first international workshop on interim-PET scan in lymphoma.

Leuk.Lymphoma 2009;50:1257-1260.



Advanced stage criteria

Score 1 no uptake

Score 2 uptake \leq mediastinum

Score 3 uptake $>$ mediastinum but \leq liver

Score 4: uptake $>$ liver at any site

Score 5 uptake $>$ liver and new sites of disease

Score X:

new areas of uptake unlikely to be related to lymphoma



Early stage criteria

Score 1 no uptake

Score 2 uptake \leq mediastinum

Score 3 uptake $>$ mediastinum but \leq liver

Score 4: uptake $>$ liver at any site

Score 5 uptake $>$ liver and new sites of disease

Score X:

new areas of uptake unlikely to be related to lymphoma



Reporting

- ? Limited vs advanced disease
 - ? HD vs DLBCL
 - ? Different therapy regimes
 - ? De-escalation vs intensification
- o Same criteria BUT different cut off



Image interpretation

Standardisation of reporting

Reproducibility

Minimal residual uptake, however defined may have different significance according to