



*How to ensure the reliability of
PET data in clinical trials: the FIL
experience*

Stephane Chauvie

Medical Physics Dept, S. Croce e Carle Hospital, Cuneo

1. Expert Panel Review

Multiple image interpretation

3. Scanner Equalization

Varying makers/models of imaging equipment

2. Procedure Harmonization

Varying image/acquisition protocols

CUNEO PET CORELAB

230

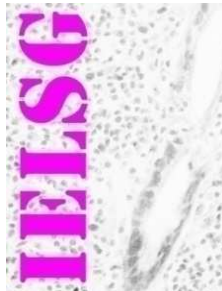
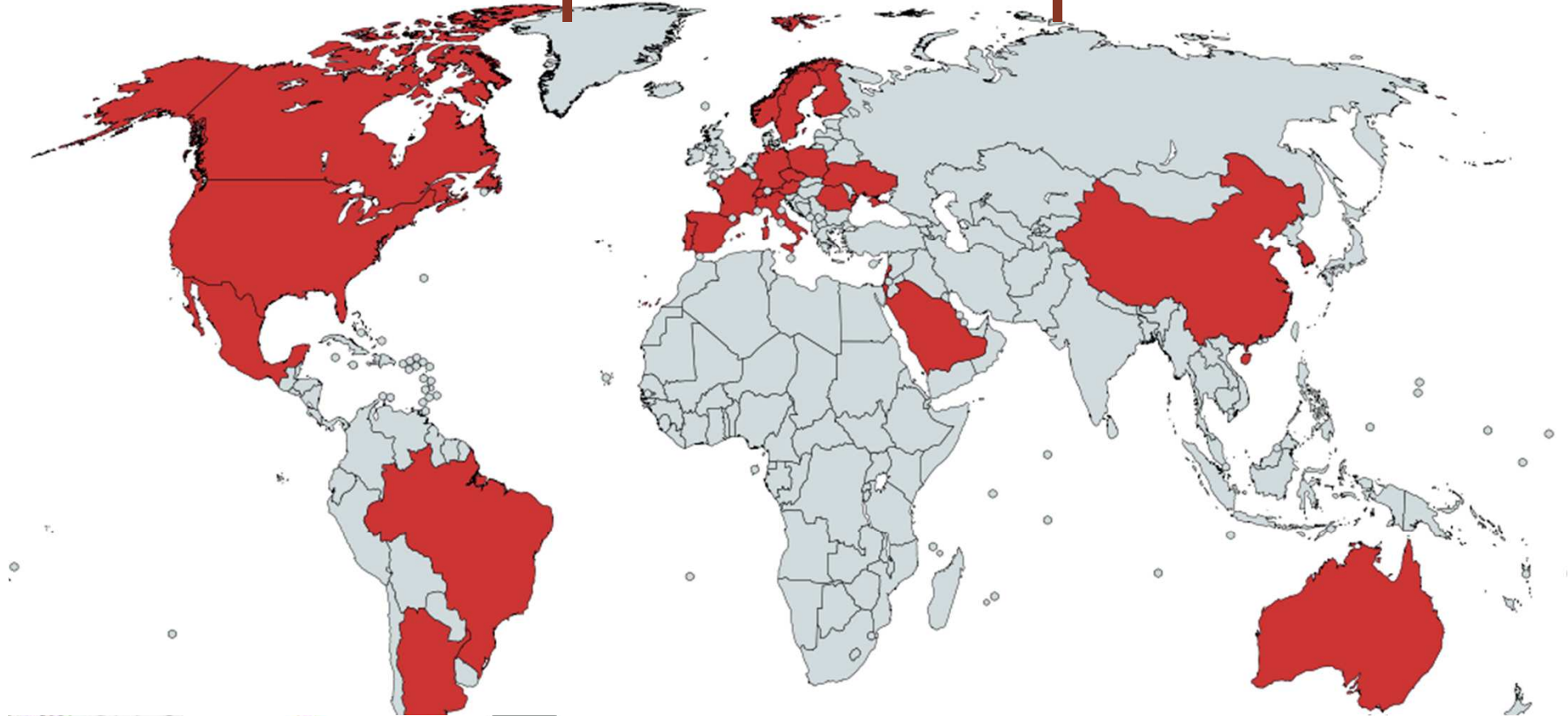
CENTERS

26

COUNTRIES

4

WHOLE NATION



SAKK

The Swiss Oncology Re

Polska
Grupa
Badawcza
Chłoniaków

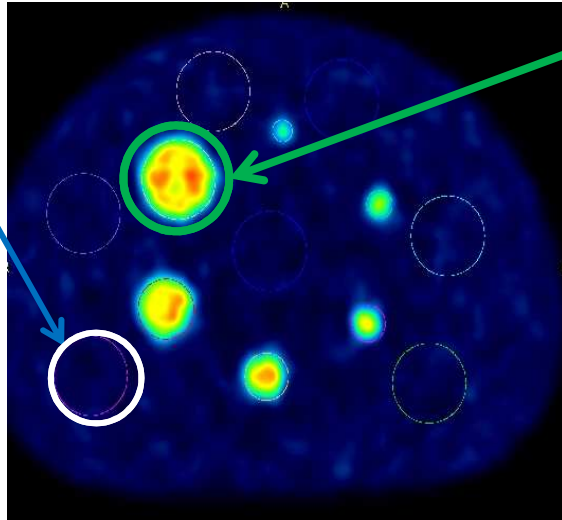


SCANNER EQUALIZATION

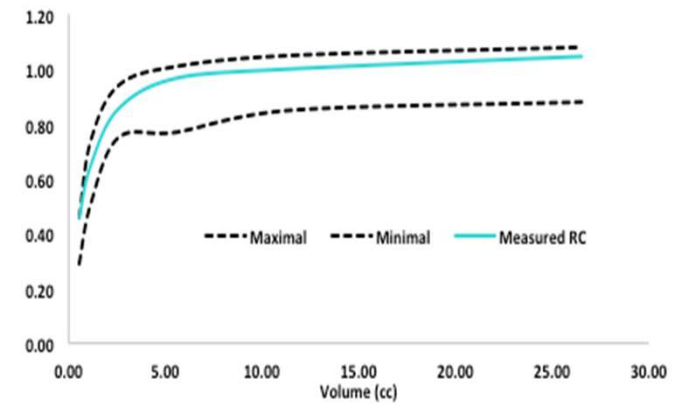
Background Activity Concentration (BAC)

Sphere to Background Ratio in the largest spheres (SBR)

Scanner Calibration



Reconstruction algorithm optimization



INTER SCANNER VARIABILITY
ISV = 95% C.I.

CTQ FOR QUALITATIVE SCALE



in collaboration with AIFM
and AIMN since 2007



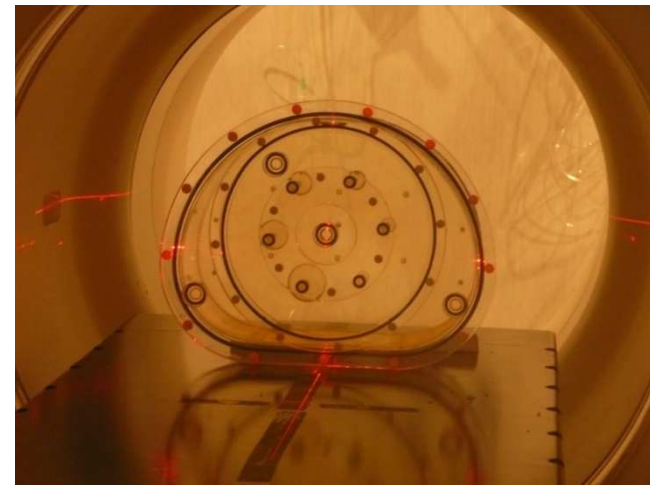
^{18}F Phantoms done by local expert

Limits for CTQ:

- $\text{BAC} \pm 10\%$
- RC Curve between EANM Guidelines

Free of participation

All PET sites participating at FIL
trials





75 PET sites
85 PET scanner

Rozzano, BS, BG, MB, MI-int (2), MI-Niguarda, MI-pol, Mi-Sanpaolo, MI-hsr (2+1), MI-ileo, PV, VA

BZ, TN

PD, Mestre, VR, TV, Castelfranco, VI

Aviano, UD

RE, PR (2), MO, BO (2), Meldola, CE

AL, CN, NO, Candiolo, TO-CdS, TO-Irmet (2)

GE

AN, MC, AP

PE

PI, AR, FI, PO, Carrara

CB

BA, BR, , LE, S.G.Rotondo, FG

PG, Terni, Foligno

RM-tv (2), RM-ifo, LT, RM-Gem

SA, NA-Pa, NA-SDN (3), AV, Na-Fed II

Rionero, PZ

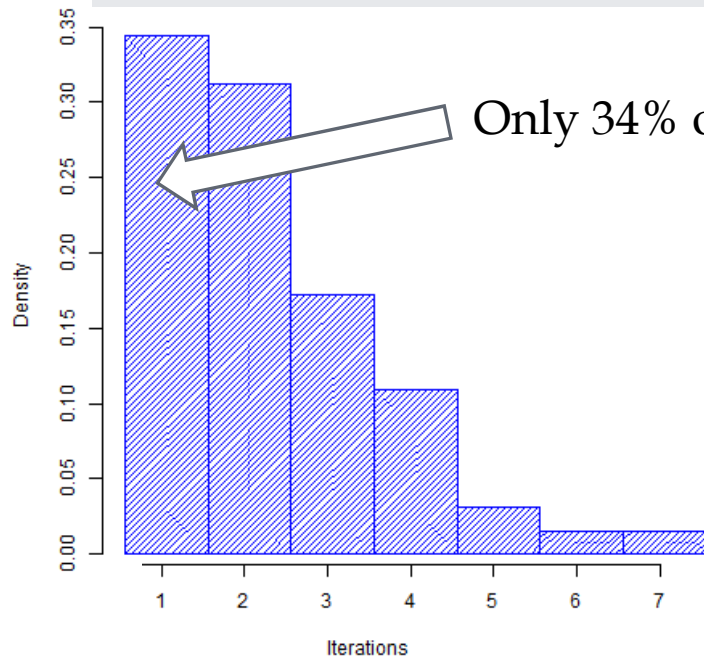
CA-bi, CA-bu

CS, CZ

CT, CT-gn, ME, PA, PA-Mad(2), Cefalù, ME-Papardo

CTQ FOR QUALITATIVE SCALE

FREQUENCY OF ITERATIONS



Only 34% of PET/CT sites qualified at first iteration!

Problems in qualification:

- No trained personnel (5 sites)
- Lack of phantoms (12 sites)

CTQ FOR QUALITATIVE SCALE

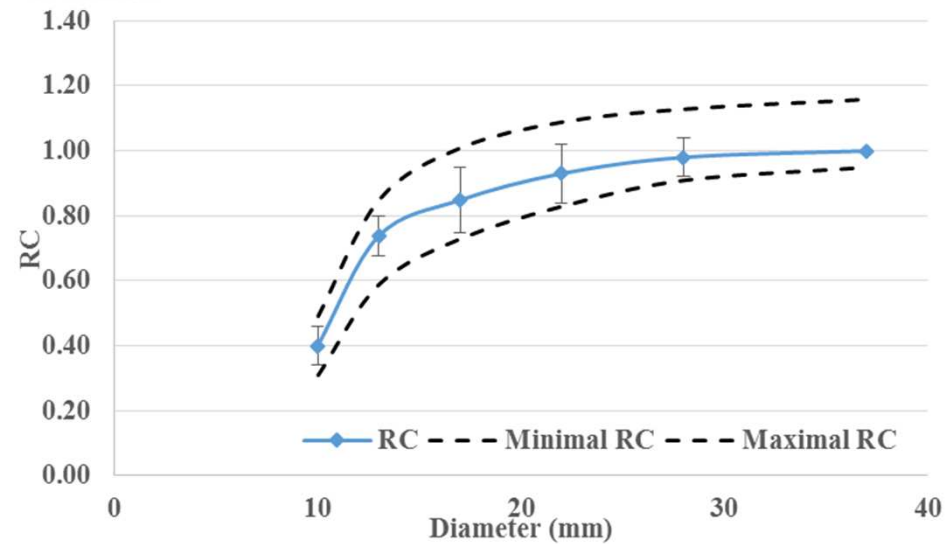
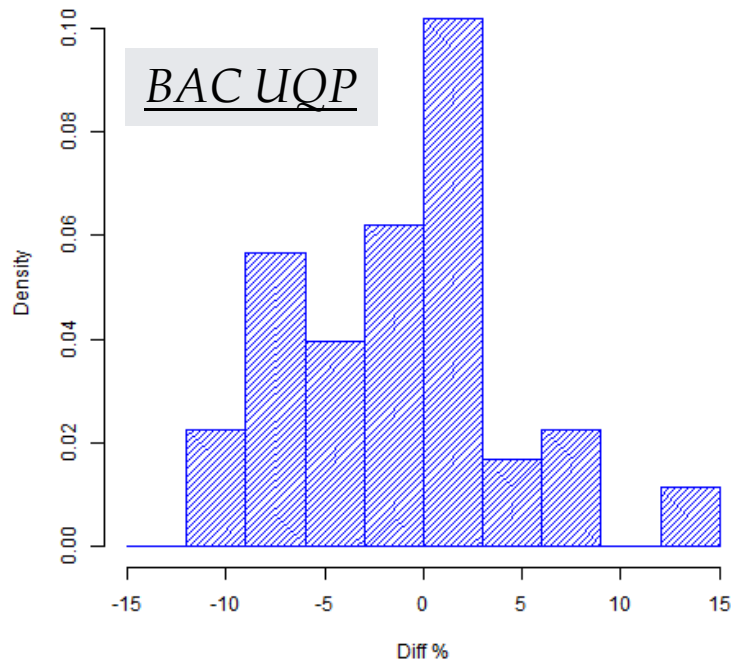
BAC in UQP

95% CI (-11.9 to +9.3%)
ISV: 21.2%



SBR in IQ

95% CI (-18.3% to 32.3%)
ISV: 50.6%



CTQ FOR QUANTITATIVE SCALE

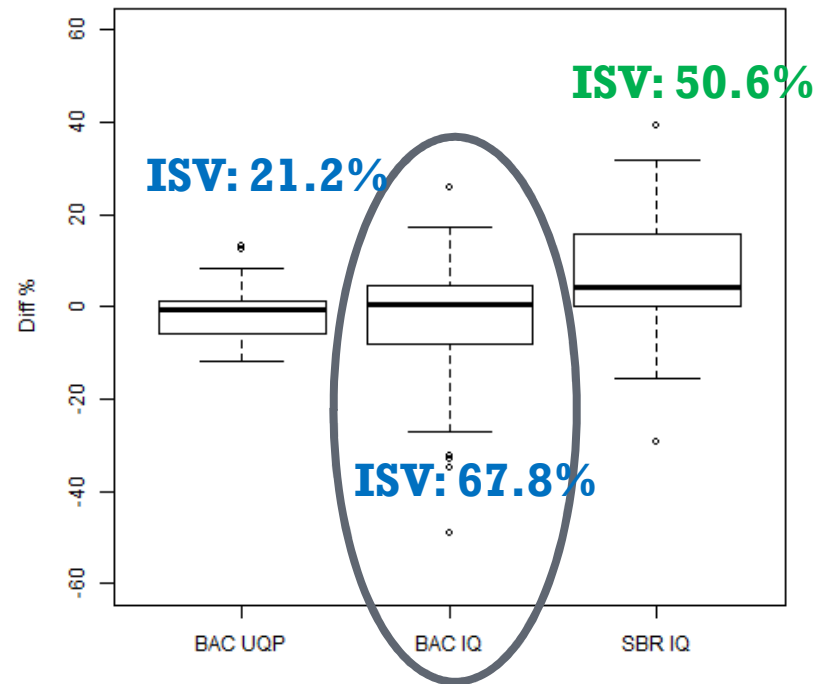
BAC in IQ

(the one not used for absolute calibration)

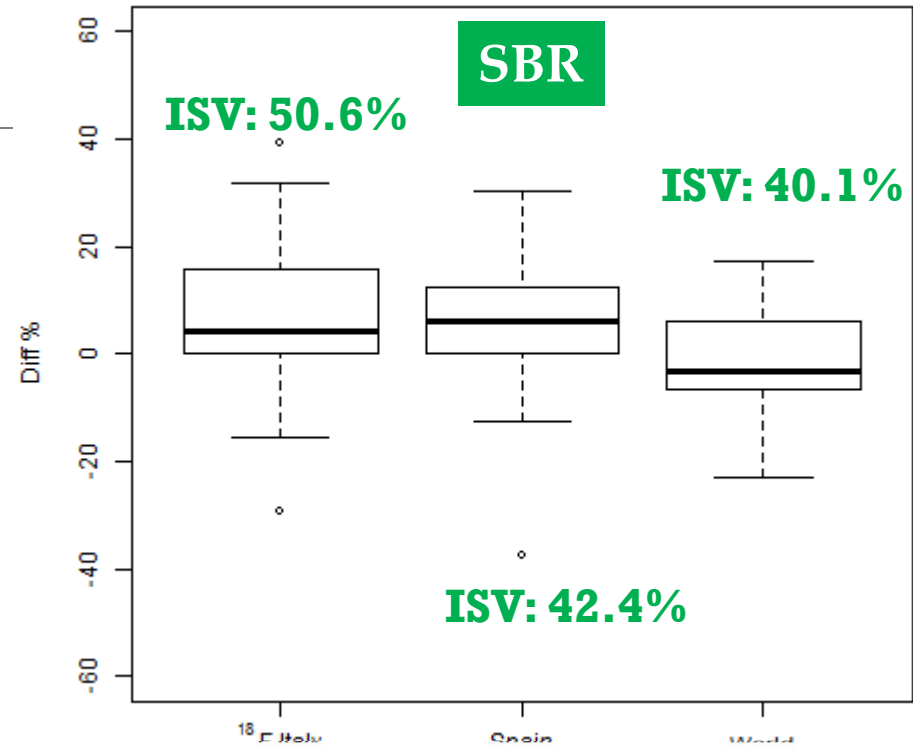
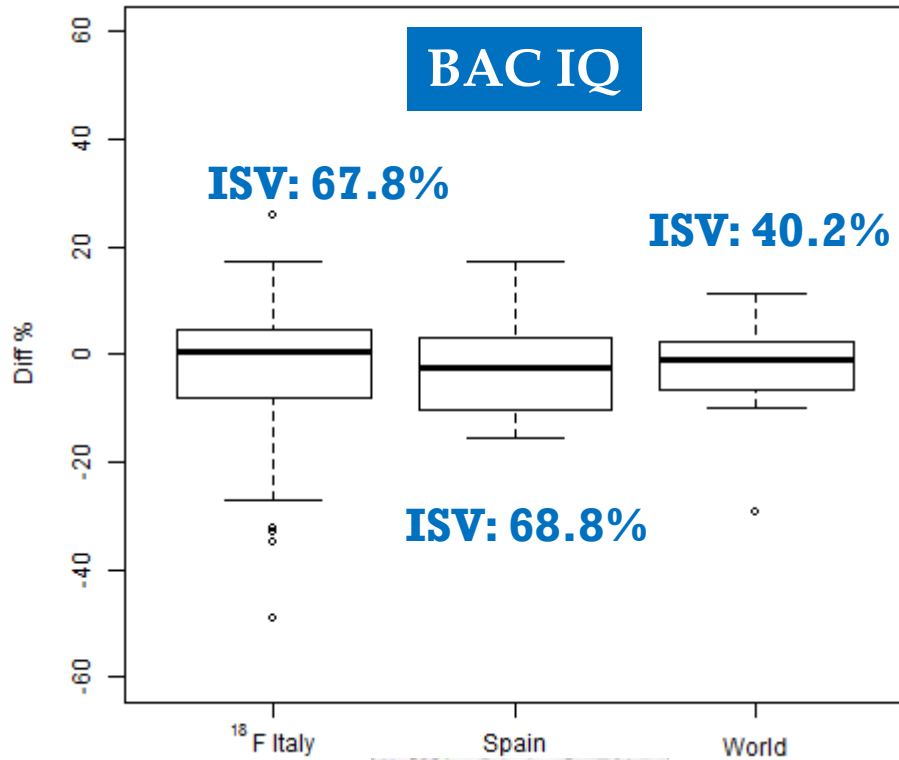


95% CI (-38.1 to +29.7%)

ISV: 67.8%



INTERNATIONAL EXPERIENCE



CTQ FOR QUANTITATIVE SCALE



NEMA PET Phantom with 8 hot spheres

- Radionuclide: Ge-68
- Half-life: 270.8 days

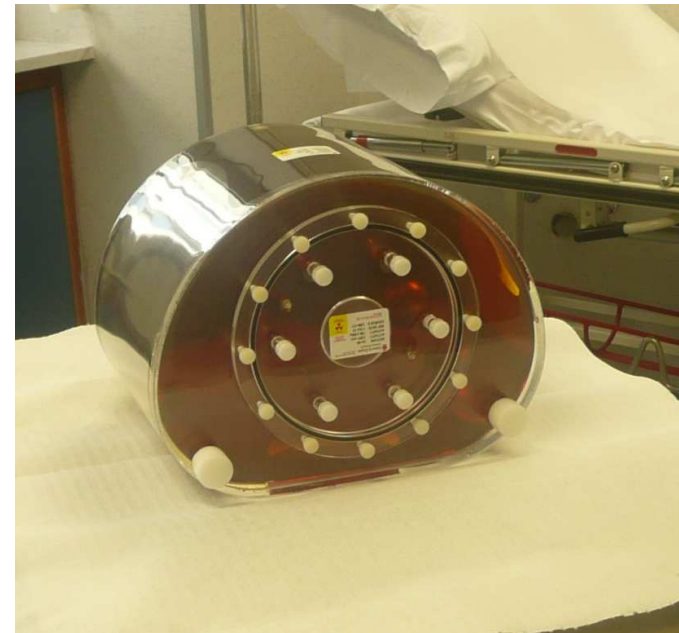
⁶⁸Ge Phantoms

Limits for CTQ:

- BAC $\pm 10\%$
- RC Curve between EANM Guidelines

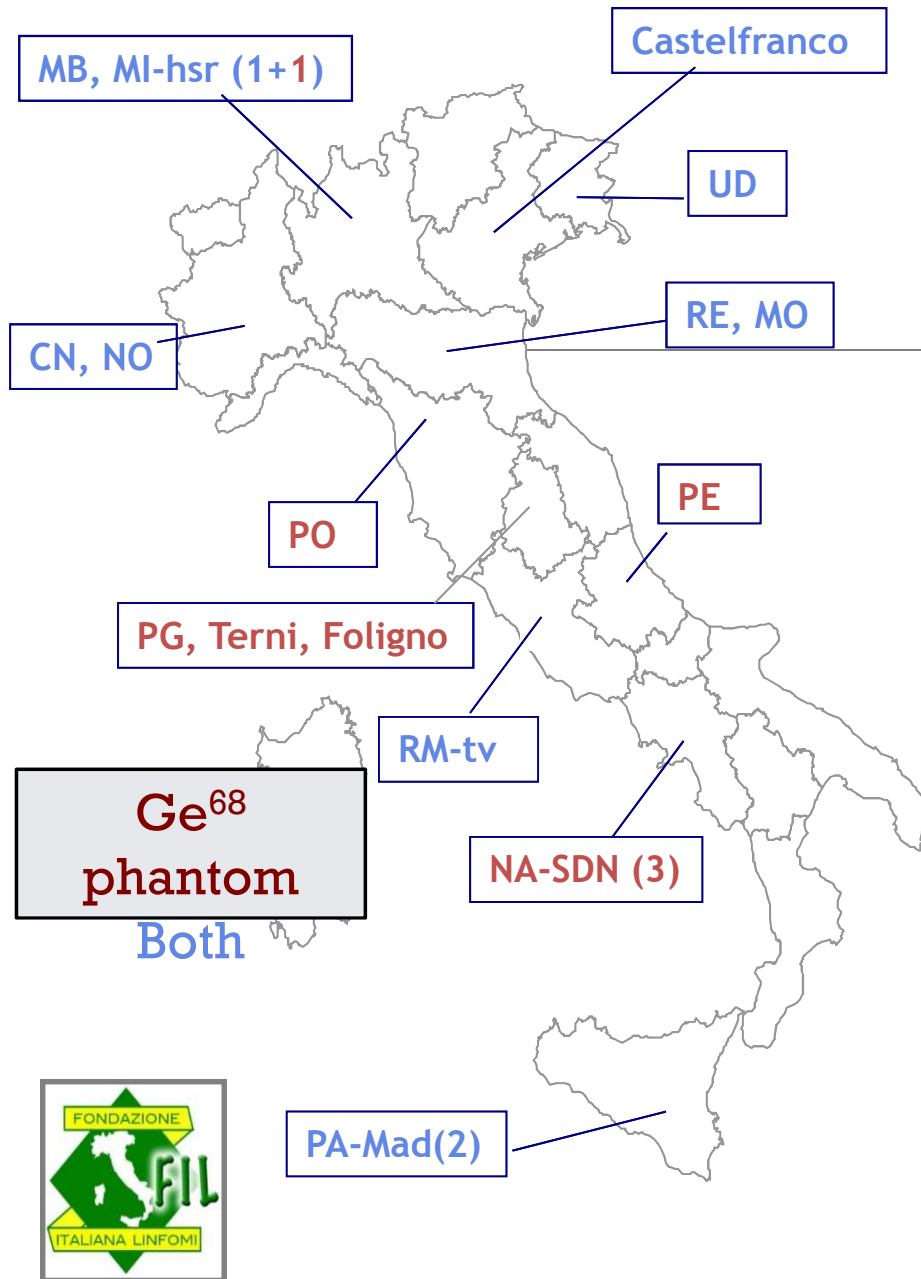
Free of participation

grant RF-CROB-2008-1146343 Ministero della Salute



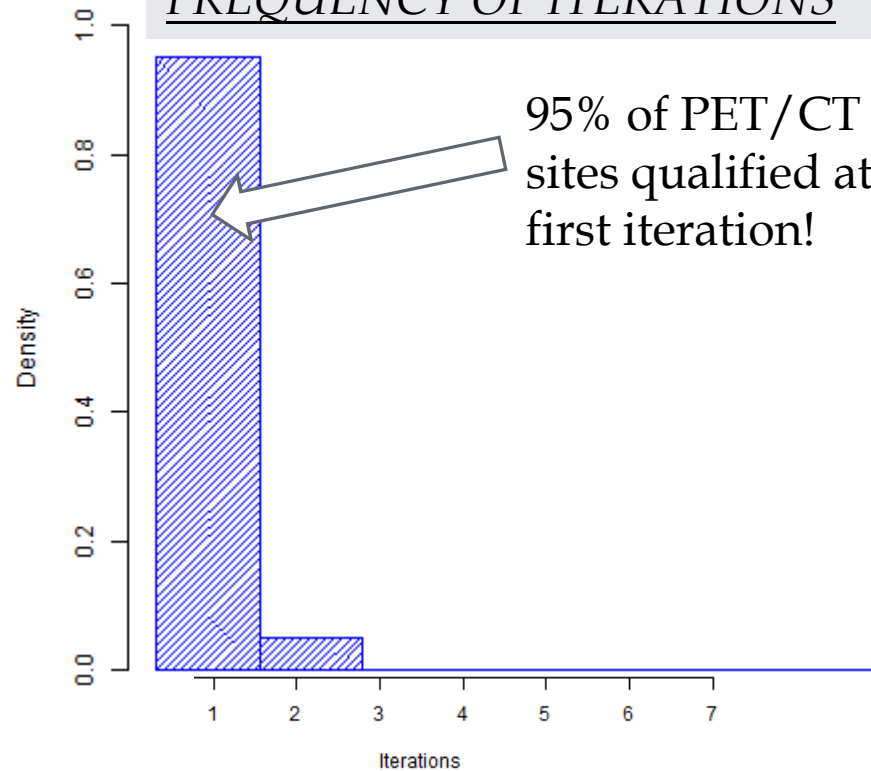
IRCCS CROB

Istituto di Ricovero e Cura
a Carattere Scientifico



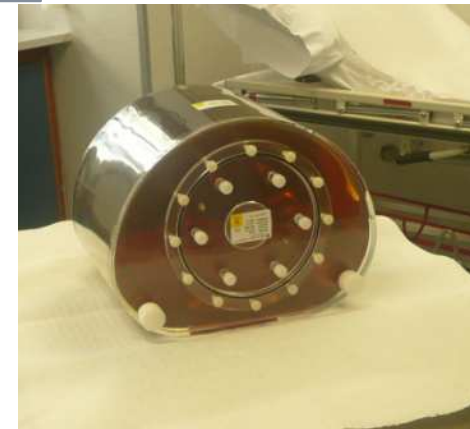
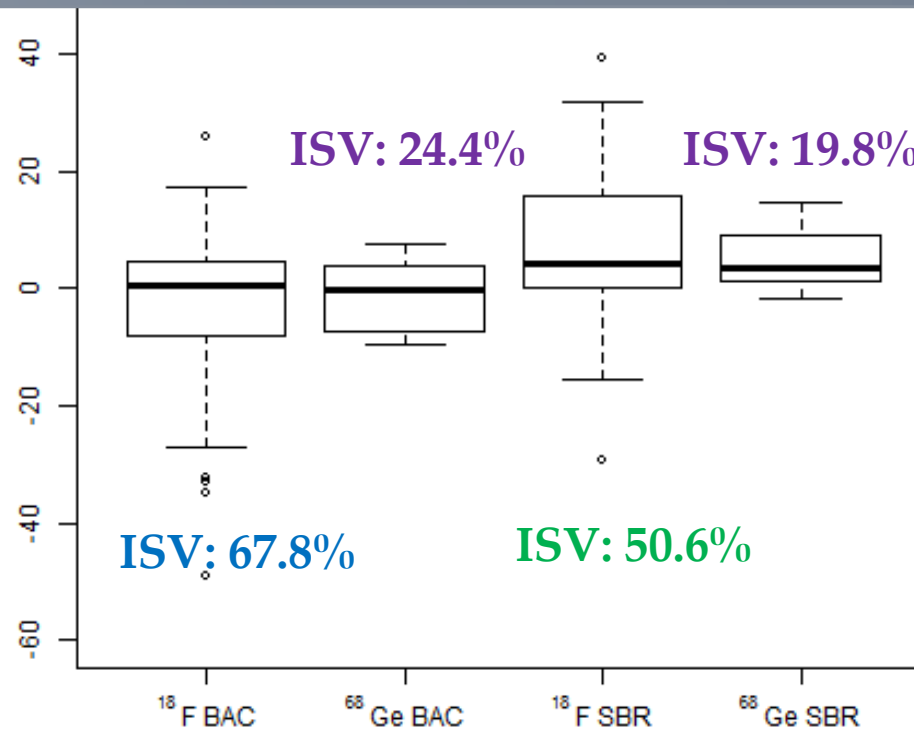
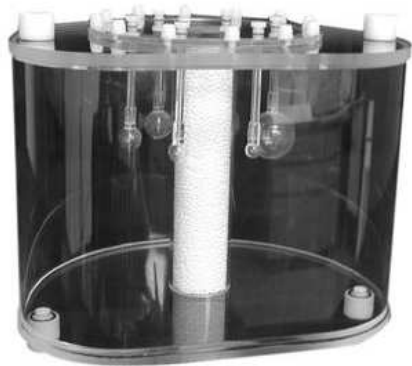
20 PET scanner qualified

FREQUENCY OF ITERATIONS



CTQ FOR QUANTITATIVE SCALE

REDUCTION OF A FACTOR 3



Original paper

The ^{68}Ge phantom-based FDG-PET site qualification program for clinical trials adopted by FIL (Italian Foundation on Lymphoma)



Stephane Chauvie^{1,*,} Fabrizio Bergesio^{2,} Federica Fioroni^{3,} Marco Brambilla^{4,} Alberto Biggi^{5,} Annibale Versari^{6,} Luca Guerra^{4,} Giovanni Storto^{7,} Pellegrino Musto^{8,} Stefano Luminari^{9,} Maria G. Cabras^{2,} Monica Balzarotti^{11,} Luigi Rigacci^{1,} Maurizio Martelli^{1,} Umberto Vitolo^{12,} Massimo Federico^{5,} Andrea Gallamini¹

CTQ FOR ABSOLUTE QUANTIFICATION



AQQ

UBER Phantom

- ✓ cylindrical
- ✓ 8 hot spheres
- ✓ 1 insert to simulate lesion



Lesion Detectability performance of new scanners

Cross-Calibration

Noise evaluation

Optimization of reconstruction algorithm

Choose of best segmentation algorithm

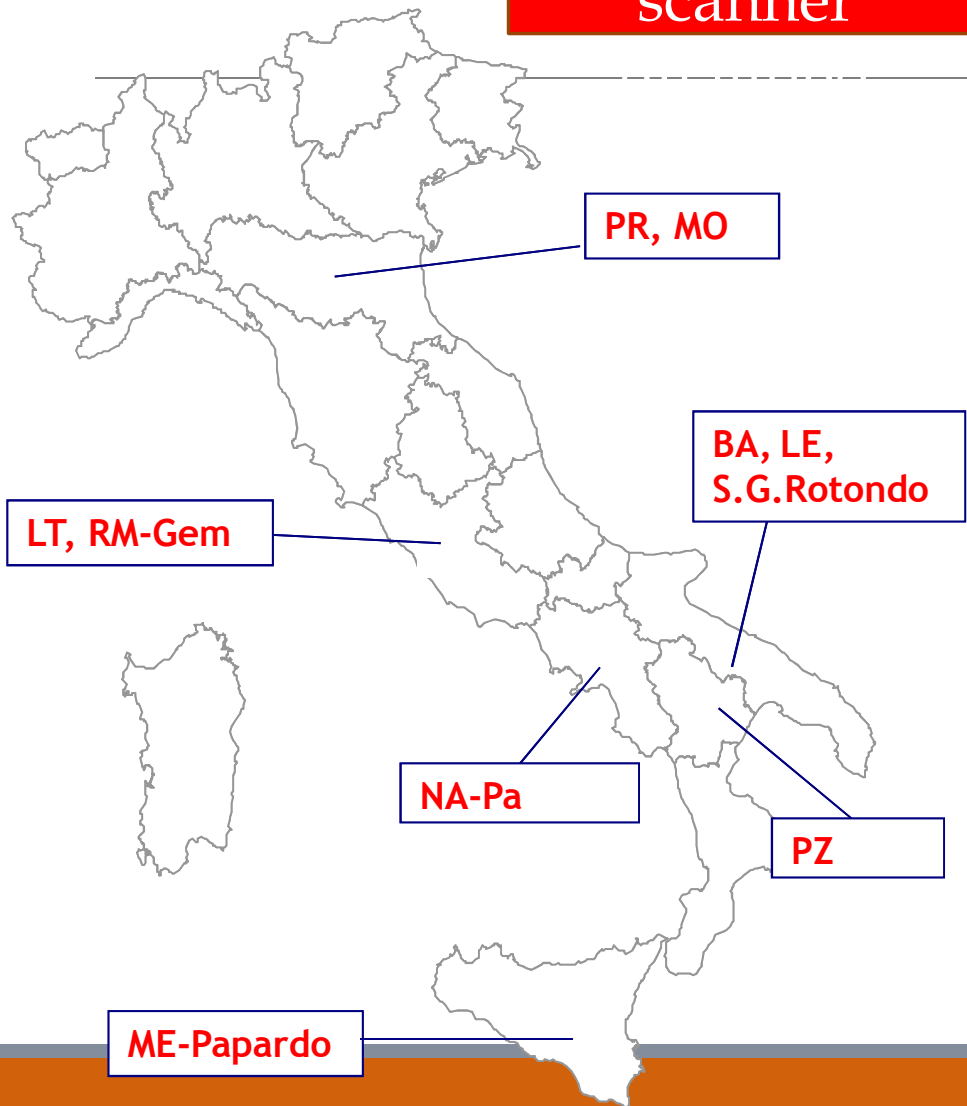


Uber phantom was acquired in Lugano Hospital

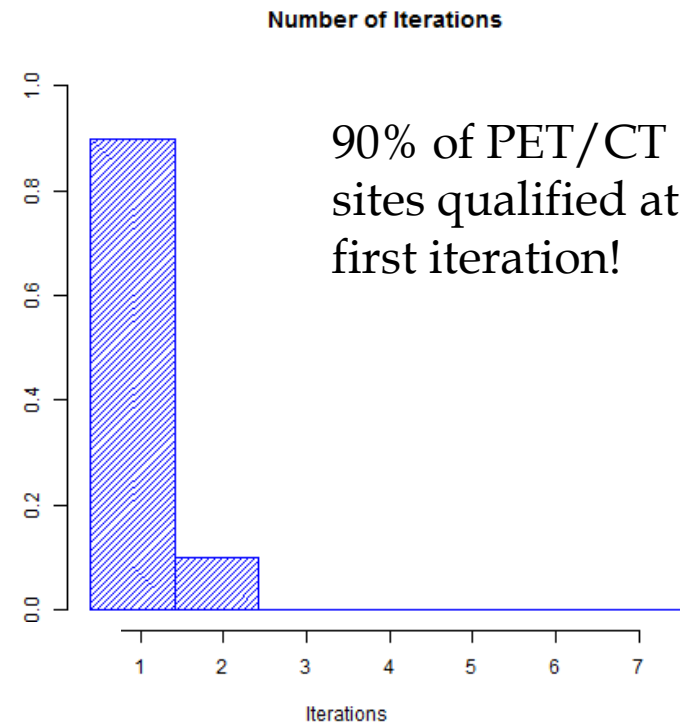


CTQ FOR ABSOLUTE QUANTIFICATION

20 PET scanner



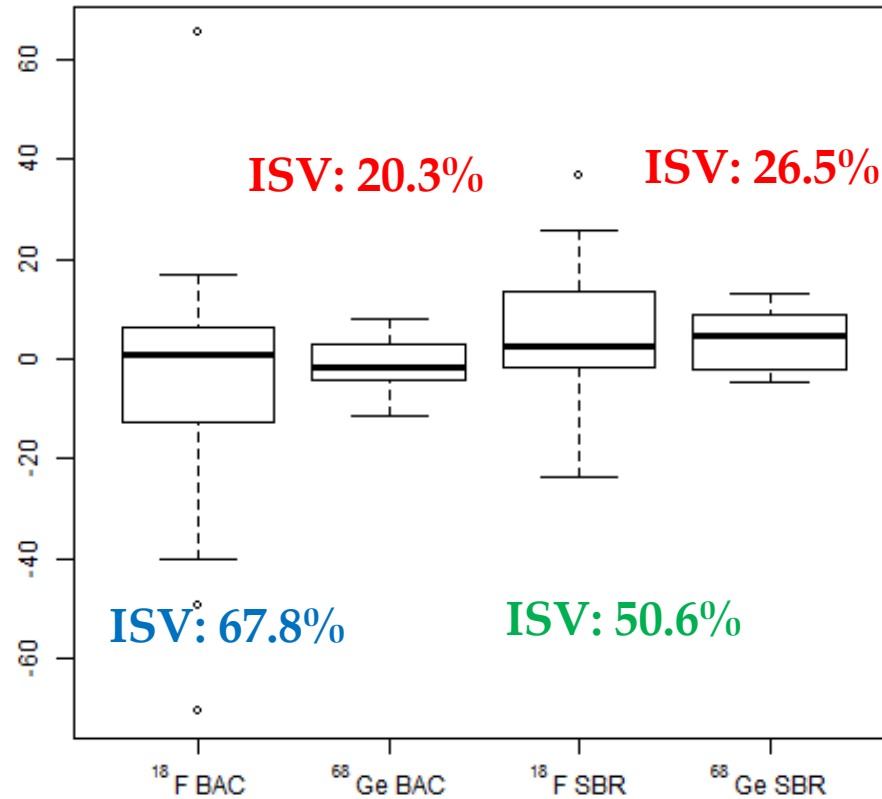
FREQUENCY OF ITERATIONS



CTQ FOR ABSOLUTE QUANTIFICATION



64 scanner



10 scanner

Analogous reduction

CONCLUSIONS

¹⁸F CTQ

- ✓ useful for qualitative scale, **not** for quantitative scale
 - ✓ not simple to do (need experience and phantom)
-

⁶⁸Ge CTQ

- ✓ useful for quantitative scale
- ✓ no problem in preparation and acquisition
- ✓ possibility to introduce new features (optimization of reconstruction algorithm)

UBER CTQ

- ✓ cross calibration
- ✓ evaluation of new reconstruction algorithm
- ✓ reduction of limit and introduction of new request for CTQ



75 PET sites
84 PET scanner

Rozzano, BS, BG, MB, MI-int (2), MI-Niguarda, MI-pol, Mi-Sanpaolo, MI-hsr (2+1), MI-ileo, PV, VA

BZ, TN

PD, Mestre, VR, TV, Castelfranco, VI

Aviano, UD

RE, PR, MO, BO (2), Meldola, CE

AL, CN, NO, Candiolo, TO-CdS, TO-Irmet (2)

GE

AN, MC, AP

PE

PI, AR, FI, PO, Carrara

CB

BA, BR, LE, S.G.Rotondo, FG

PG, Terni, Foligno

RM-tv (2), RM-ifo, LT, RM-Gem

78 PET Scanner F¹⁸ phantom (93%)
4 PET Scanner Not qualified (5%)
2 PET Scanner CTQ ongoing (2%)

SA, NA-Pa, NA-SDN (3), AV, Na-Fed II

Rionero, PZ

CA-bi, CA-bu

CZ, RC

CT, CT-gn, ME, PA, PA-Mad(2), Cefalù, ME-Papardo

Thanks for the attention