

International
Cancer Imaging
Society

Advancing imaging in the multidisciplinary management of cancer.

Passionate about excellence in oncological education

Stimulate research in the study of human tumour behaviour

Bringing together radiologists and clinicians with an interest in oncological imaging

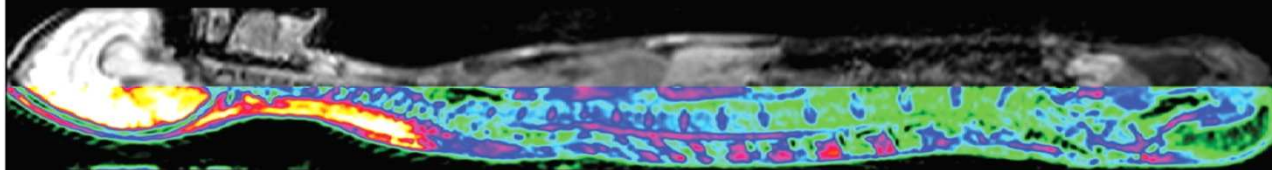
Exchange ideas and research



Cancer Imaging

Impact Factor 1.470

- The official journal of ICIS
- International Editorial Board of cancer imaging experts



- High visibility – More than 90,000 article accesses per month
- No charges to publish clinical images or videos

ICIS Interactive Series

Masterclass in Imaging of Hepatobiliary Cancers

28 April 2016, London

Masterclass in Imaging of Pancreatic Tumours

November 2016, London

Masterclass in Imaging of Prostate Cancer

24 October 2016, Stockholm

International Cancer Imaging Society 16th Annual Teaching Course
'Cancer Imaging: More than Meets the Eye'
3rd - 5th October 2016, Glasgow, Scotland



International Cancer Imaging Society 16th Annual Teaching Course

'Cancer Imaging: More than Meets the Eye'
3rd - 5th October 2016, Glasgow, Scotland

Plenary sessions

Interactive Sessions with Audience Participation

Hands-On Computer Based Workshops



International Cancer Imaging Society 17th Annual Teaching Course

2nd - 4th October 2017

Langenbeck-Virchow Haus, Berlin



International Cancer Imaging Society 17th Annual Teaching Course

2nd - 4th October 2017

Langenbeck-Virchow Haus, Berlin

Assessing Therapy Response in Molecular Therapies

- Chemotherapy
- Molecular Therapy
- Radiation Therapy
- Thermal Ablation



International Cancer Imaging Society 17th Annual Teaching Course

2nd - 4th October 2017

Langenbeck-Virchow Haus, Berlin

Therapy Associated Changes in Oncologic Therapies

- Chest
- Abdomen
- Brain
- Skeleton



International Cancer Imaging Society 17th Annual Teaching Course

2nd - 4th October 2017
Langenbeck-Virchow Haus, Berlin

Whole Body Imaging

- Lymphoma and Leukaemia
- Multiple Myeloma
- Metastatic Disease

