

Second international workshop on interim-PET in lymphoma

Menton (France), Palais de l'Europe, April 8-9th, 2010

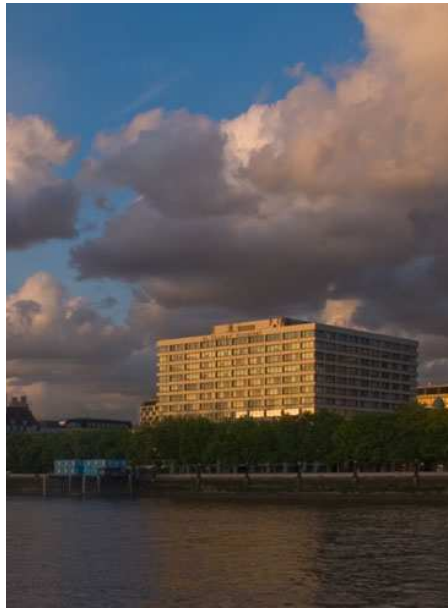
Under the auspices of GELA, IIL, EORTC, SFMN, EANM, EHA

Organization Committee

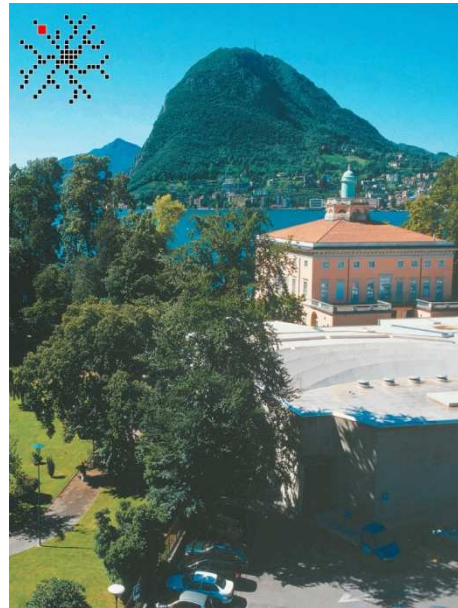
M.Meignan (France), A.Gallamini (Italy), C.Haioun (France)



International workshops on interim PET in lymphoma



**London meeting:
April 24, 2007, St. Thomas Hospital**



**Lugano meeting:
June 06, 2008; 10-ICML**



**Deauville meeting:
April 3-4, 2009 GELA meeting**

Deauville April 2009



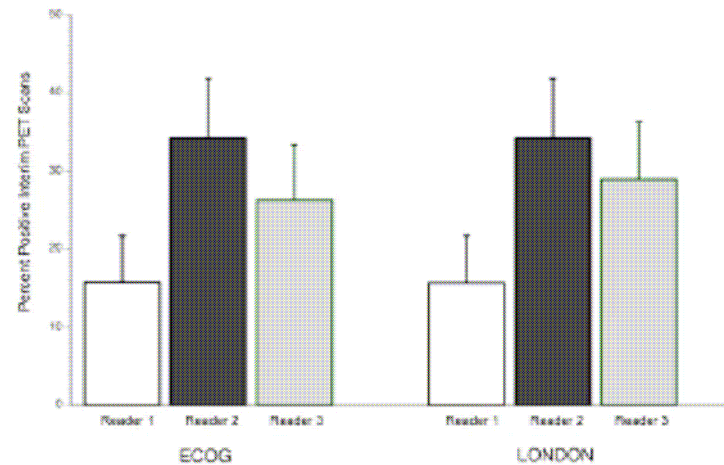
Interim-PET in DLCL

● ● ● CLINICAL TRIALS

Comment on Horning et al, page 775

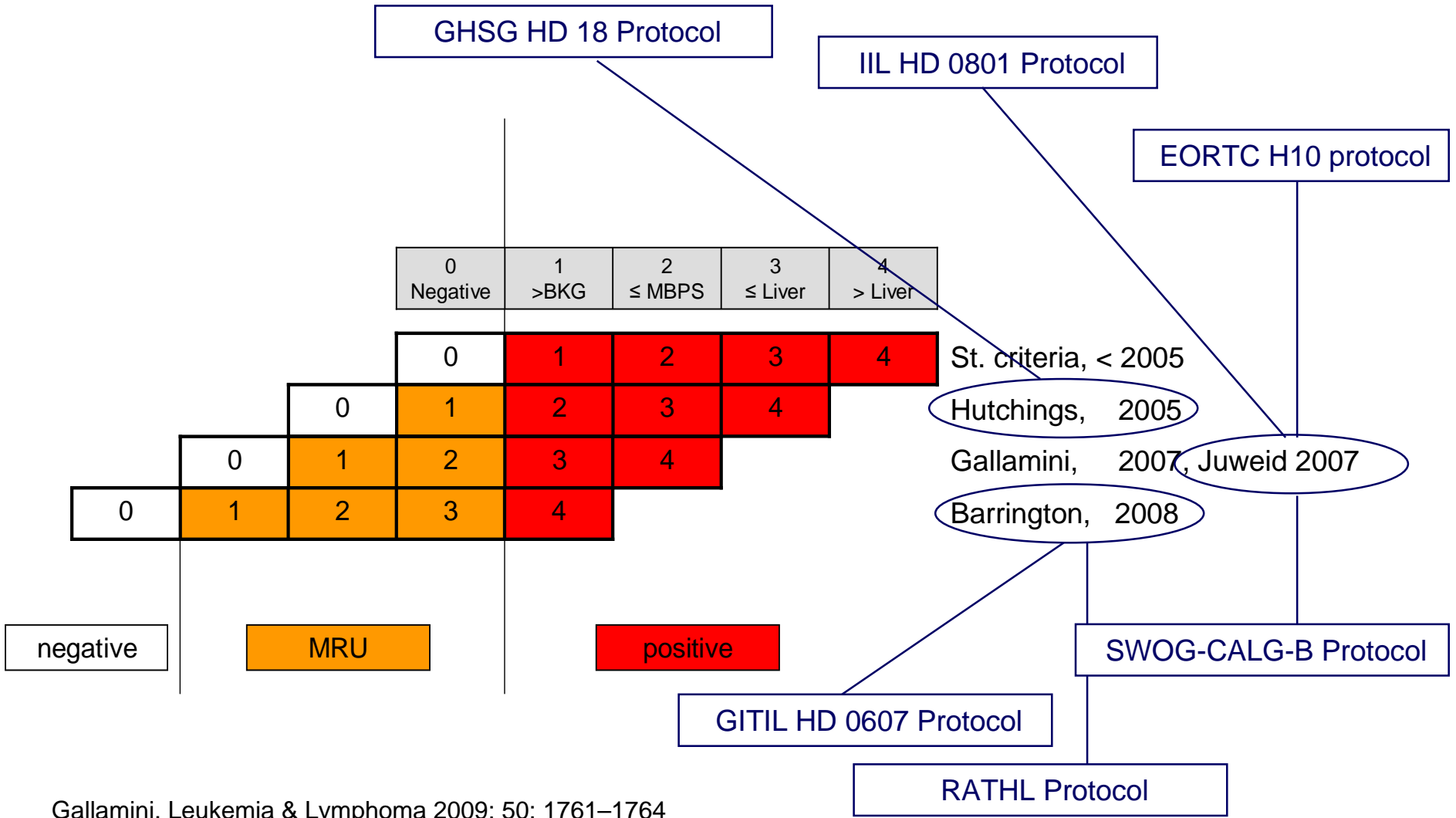
PET positive, PET negative, or PET peeve?

Friedberg JW: Blood 2010, 115: 752-3



Horning SJ: Blood 2010, 115:775-77

Interim-PET in HL



Gallamini, Leukemia & Lymphoma 2009; 50: 1761-1764

How avoiding all that ?



- International Consensus Conference
- International Validation Study (IVS) to validate the proposed criteria



In absence of a consensus...



Would be Baghdad the next venue for
PET workshop ?