

Interim PET in DLBCL : the Swiss experience

Luca Ceriani

Oncology Institute of Southern Switzerland

Bellinzona



Interim PET in DLBCL: the Swiss experience

Two ongoing studies:

➤ **SAKK** - Swiss Group for Clinical Cancer Research

Trial 38/07

Prospective evaluation of the predictive value of PET in patients with diffuse large B-cell-lymphoma under R-CHOP-14. A multicenter study.

Current status : open . Enrollment : complete Recruitment from Swiss centers

Estimated Primary Completion Date: June 2011 (Final data collection date for primary outcome measure)

➤ **IELSG** - International Extranodal Lymphoma Study Group

Trial 26

A clinico-pathologic study of Primary Mediastinal B-cell lymphoma

Current Status: open Enrollment : complete Recruitment from International centers

Estimate closure Date 31/05/2010



Interim PET in DLBCL: the Swiss experience

➤ **SAKK** - Swiss Group for Clinical Cancer Research

Trial 38/07

Prospective evaluation of the predictive value of PET in patients with diffuse large B-cell-lymphoma under R-CHOP-14. A multicenter study.

OBJECTIVE:

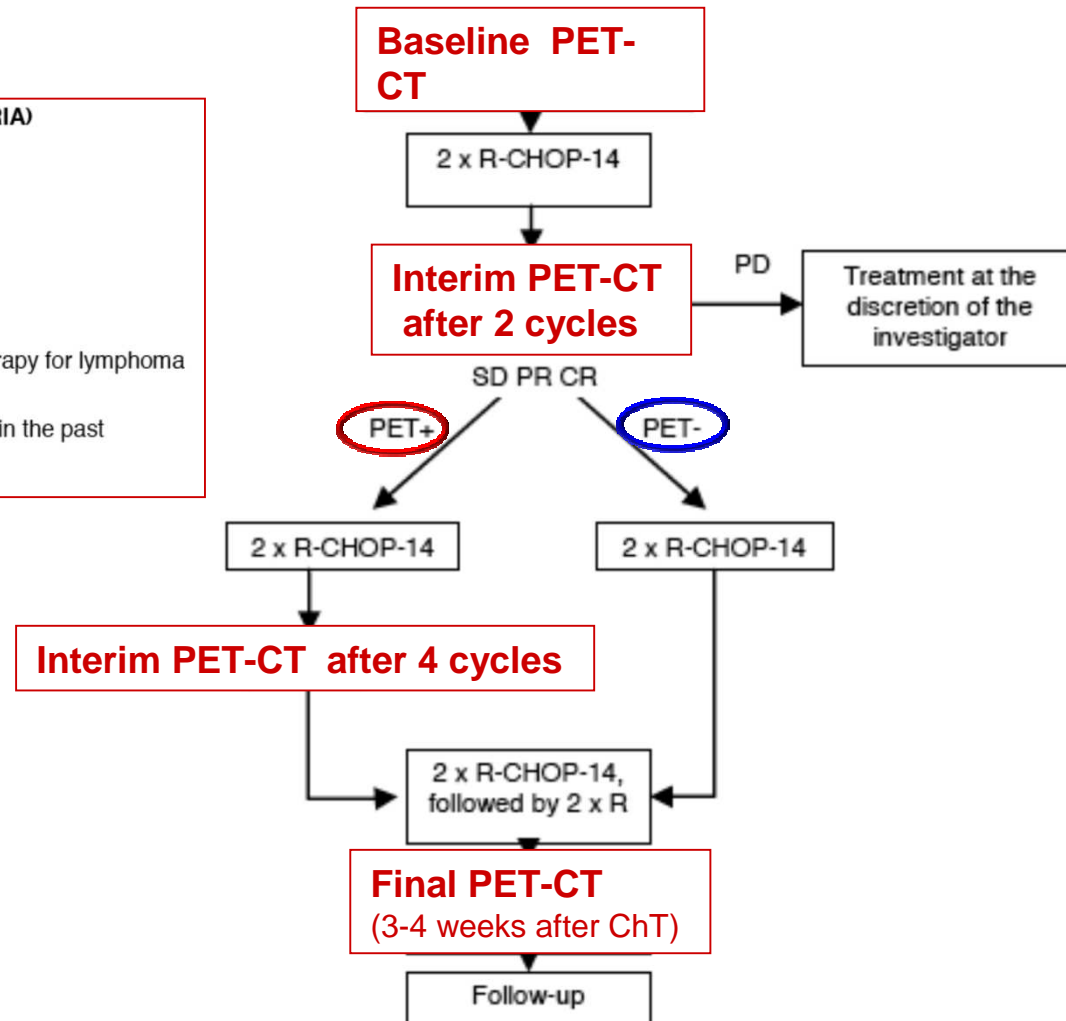
To evaluate if an early positive positron emission tomography (PET) scan after 2 courses of R-CHOP 14 can be used to identify a group of patients having a poor prognosis.



SAKK- 38-07

SELECTION OF PATIENTS (MOST IMPORTANT CRITERIA)

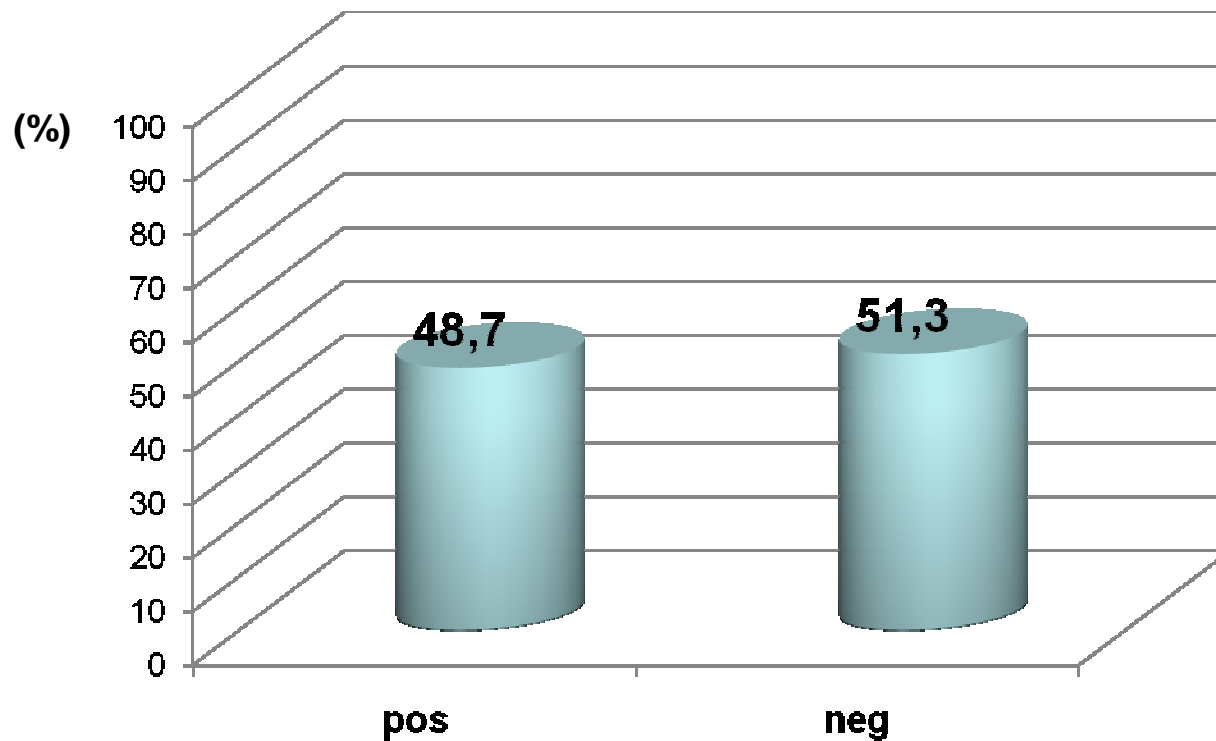
- Histologically proven diagnosis of CD20+ DLBCL
- PET+
- Measurable lesion with CT
- Age: 18-80 years
- ECOG/WHO Performance status 0–2
- Sufficient medical condition
- No prior chemotherapy, radiotherapy or immunotherapy for lymphoma
- No secondary DLBCL (Transformation)
- No concomitant or any hematological malignancies in the past
- No evidence of symptomatic CNS disease



SAKK- 38-07 Preliminary Results

interim PET positivity after the 2nd R-CHOP₁₄ cycle (n=76/ 156)

- Definition: max Uptake > max bloodpool + 15%



By the courtesy of Dr. Ch. Mamot - Aarau



Interim PET in DLBCL: the Swiss experience

➤ **IELSG** - International Extranodal Lymphoma Study Group

Trial 26

A clinico-pathologic study of Primary Mediastinal B-cell lymphoma

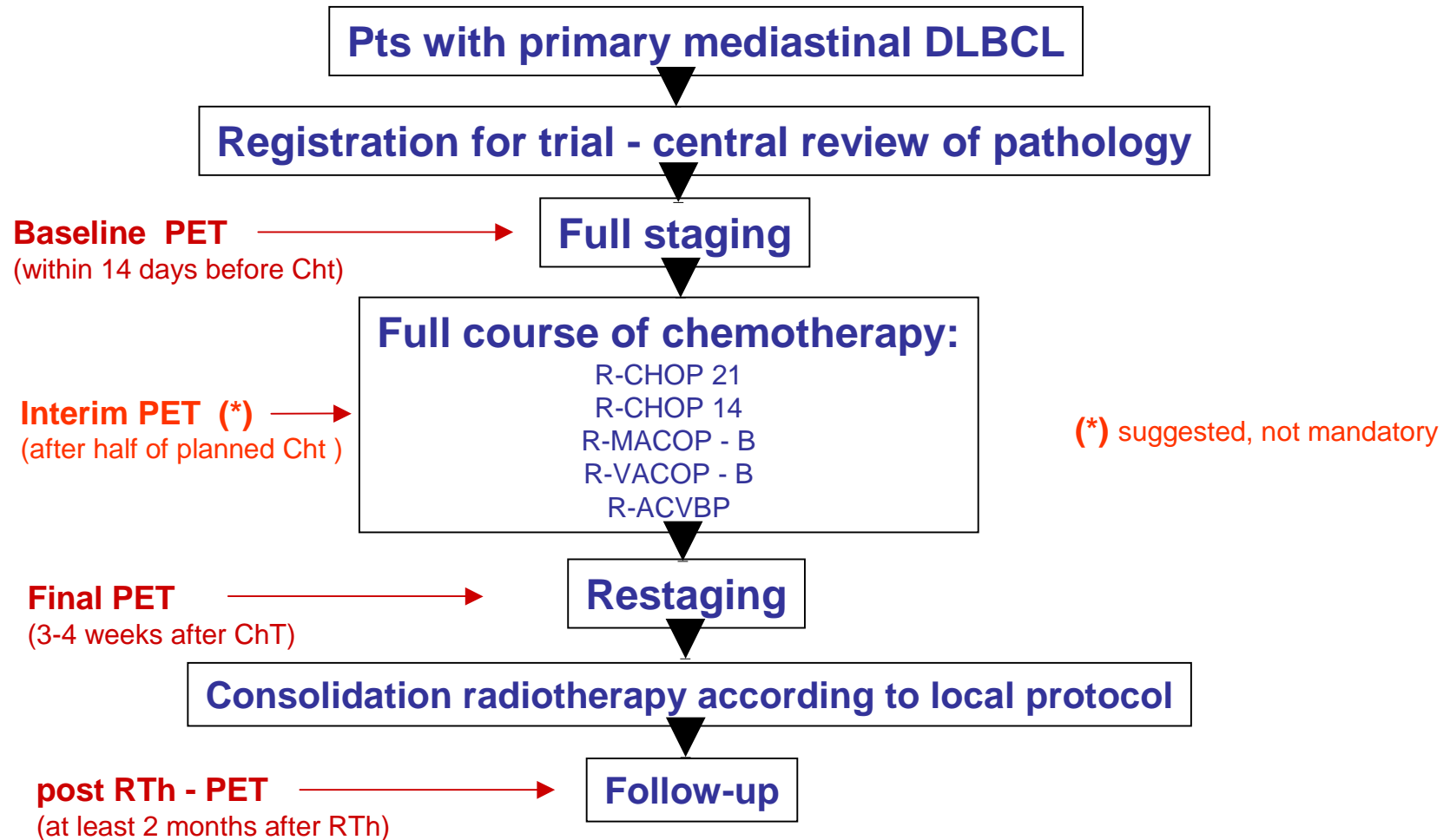
MAIN OBJECTIVE:

To obtain data on PET-CT response rate at the end of treatment in the R-chemo era, prior to design a sub-sequent randomized trial of consolidation RTh

Interim PET (not reimbursed by health insurances in several countries at the time the study was designed) was not mandatory



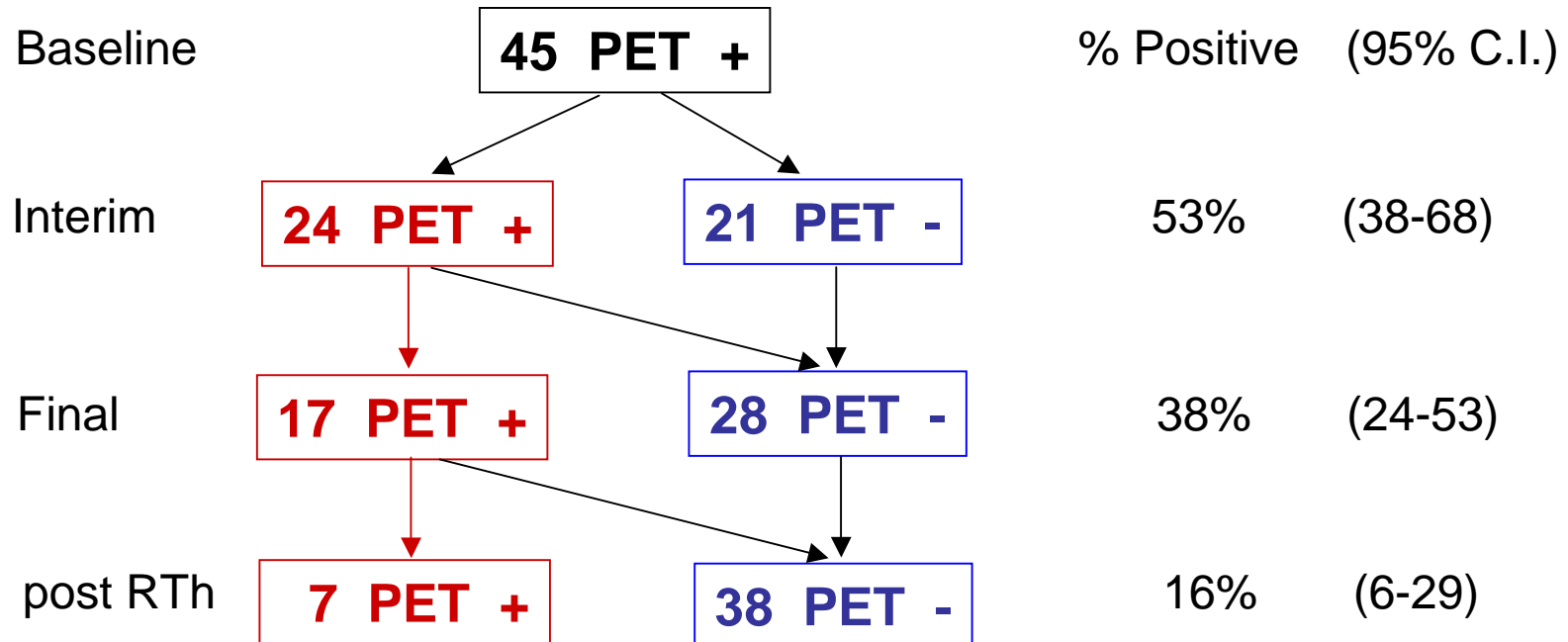
IELSG- 26



IELSG 26

Preliminary data - PET local interpretation

- **Criteria for PET (-):** Visual analysis negative or SUV max target lesion < SUV max blood pool aorta



IELSG 26

Preliminary data - PET local interpretation

