

# **PET-RIMCEB**

**Early PET driven Reduced Intensity**

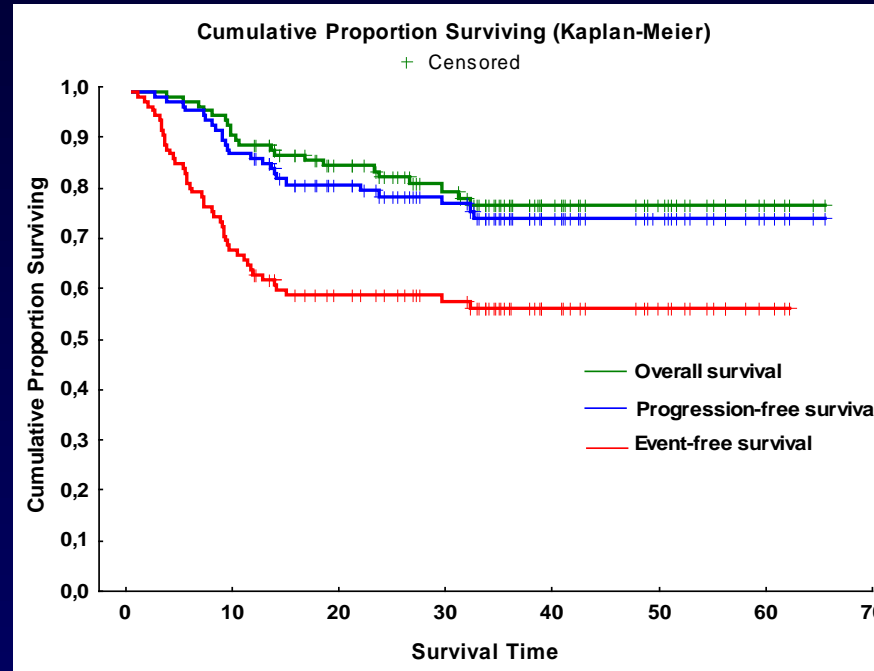
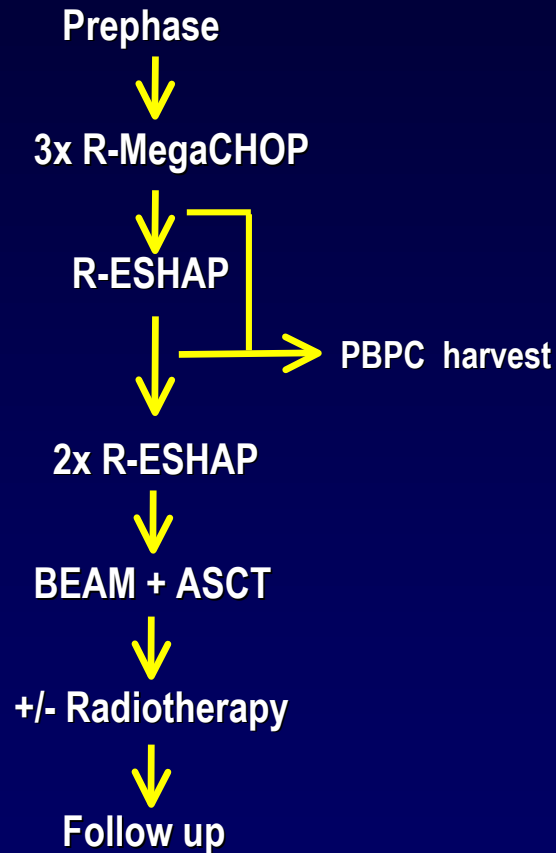
---

**MegaCHOP/BEAM**

**for young poor risk DLBCL patients.  
An international prospective multicenter  
randomized trial**

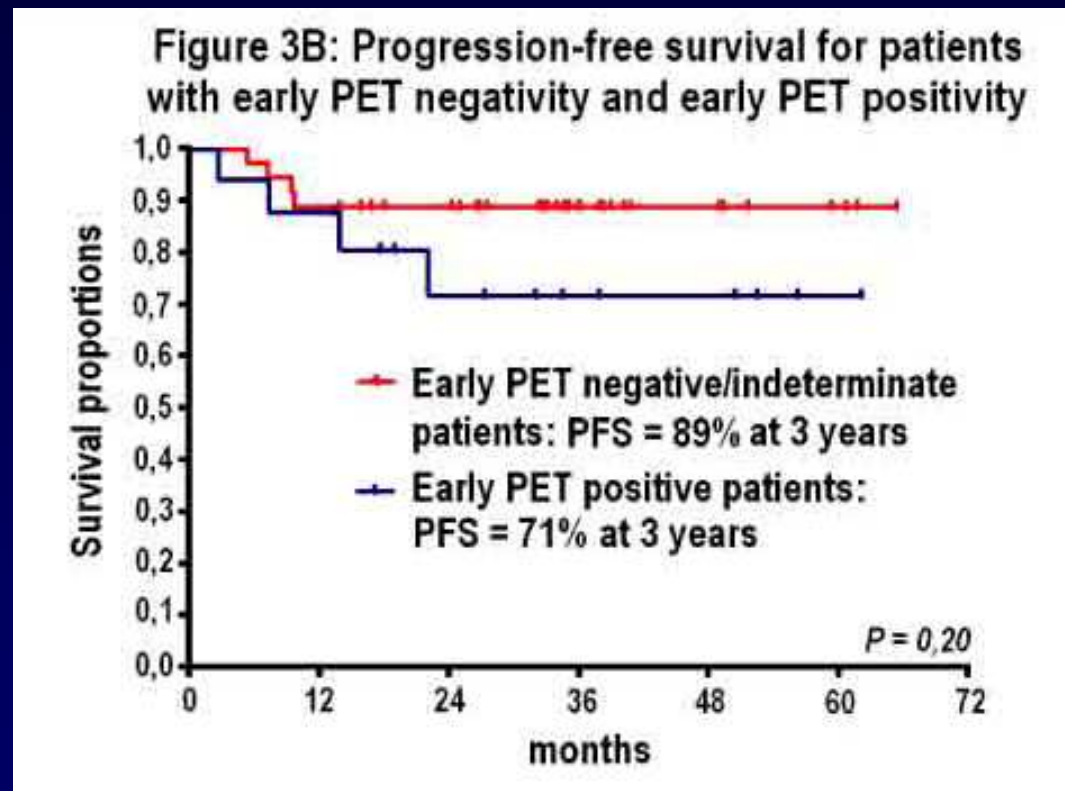
**Marek Trneny, Robert Pytlik  
on behalf of  
Steering committee**

# R-MegaCHOP/ESHAP/BEAM young poor risk DLBCL (n 105)

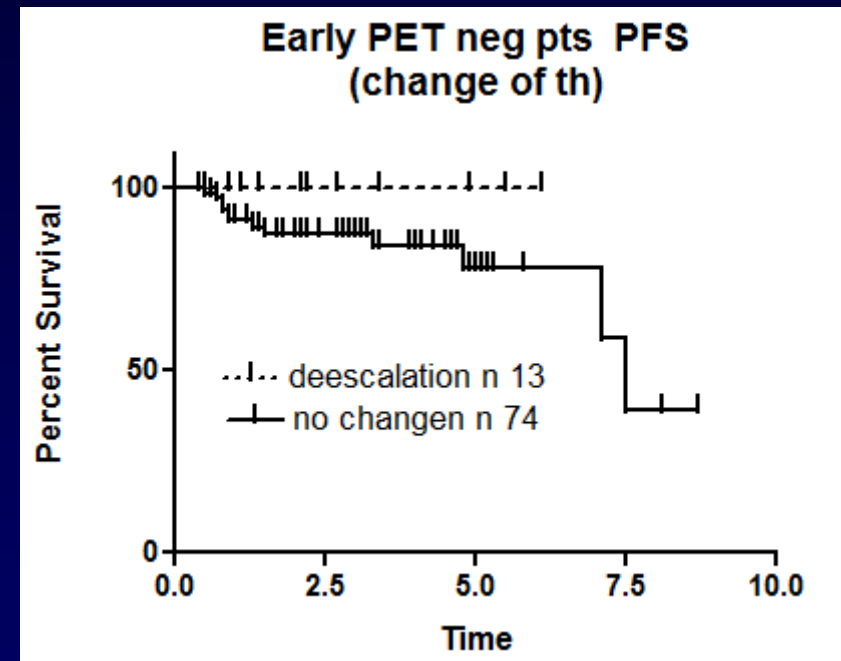
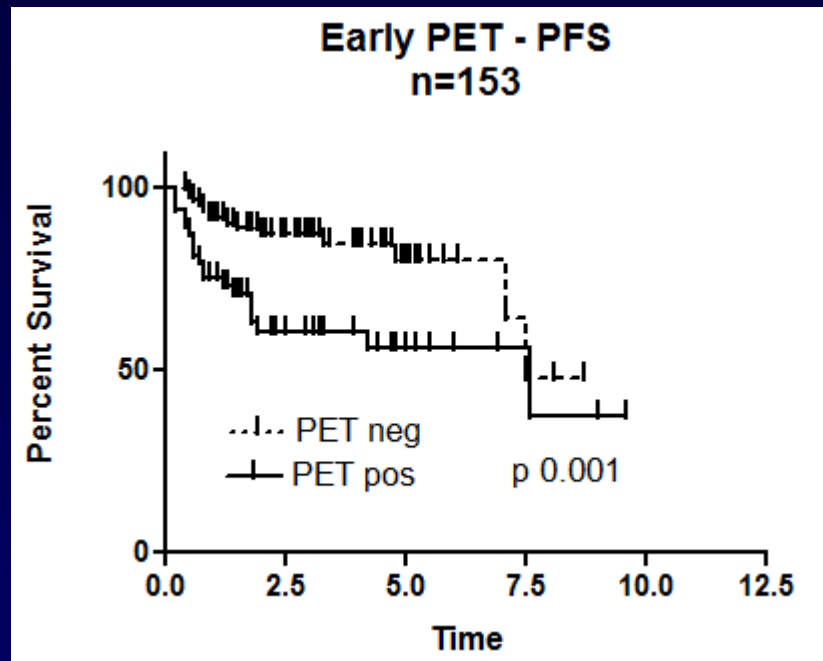


**OS: 76%**  
**PFS: 74%**  
**EFS: 56%**

# Impact on early PET result on survival (n 51)



# Early PET in DLBCL and change of treatment – retrospective study (n 153)



# RIMCEB: Trial Design

